



Reflecting God's Light

Volume 18, Issue 1

January, 2024

We serve as a Lighthouse of God to guide people to salvation in Jesus Christ. Worship, love, encouragement, and biblical teaching are the foundation by which we prepare people to face the storms of life.

DEVOTIONS for Spiritual Growth



A year that whispers Jesus

For author Nancy Tichy, a small holiday gift once sparked big-picture thoughts about Christian living. One December she received a kitchen towel with the message "I want a Christmas that whispers JESUS." That prompted thoughts of what it's like to have an entire year that whispers Jesus.

For starters, that involves daily quiet time, devotion and prayer. "Sometimes I wake with the thought of a person on my mind," writes Tichy. "I'm quiet with this impression, interceding for the family member or friend until it has lifted. Could this be a whisper from our Savior?"

Many other daily occurrences are "worthy of [Jesus'] whispered response of love," Tichy points out. That's true whether we're distracted by tasks and troubling thoughts or buoyed by encounters with contentment and joy. "For me," she writes, "whispering is part of intimacy, and that is what I want to make a hallmark of the coming year. I want closeness with our Savior that enables me to hear from him, even when he whispers."

(continued on page 5)

STAFF:

George C. Jensen, Lead Pastor
gjensen@enolacog.com

Sandra Baney, Director of Discipleship Ministries
sbaney@enolacog.com

Jill Kilker, Director of Children & Youth Ministries
jkilker@enolacog.com

Amy Kreiger, Administrative Assistant
akreiger@enolacog.com

Marilyn Zahora, Secretary
mzahora@enolacog.com

Inside this issue:

Devotions	1-5
Kids Page	3
Puzzle	4
Wednesday Adult Bible Study	6
Staff Time Away	6
Men's Ministry Breakfast	7
Ordinance Service	7
Ladies Bible Study	8
Casting a Vision Update	9
SISTERS in Christ	9
2024 Church Officers	10
Inclement Weather	11
Samuel School Survey Results	12-14
Samuel School Answers to Questions	15-17
Missions Opportunities	18
Meals Ministry	19
Offering Plate Changes	20
Camp YoliJwa Update	11&21
412 Youth News	22
Birthdays & Anniversaries	23
Calendars	



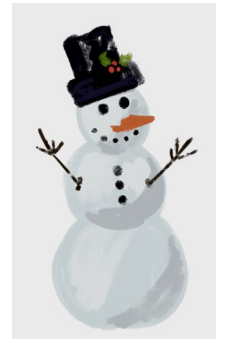
Worship SCHEDULE



SUNDAYS:	Date	Service	Theme/Message
	Jan. 7	8:00 am & 10:30 am	Ordinance Service Meditation: "Movin' on Down" - Luke 10:35-45 Pastor George Jensen speaking
	Jan. 14	8:00 am & 10:30 am	Human Relations Sunday Message: "Someday, Somewhere, We'll All Get Along!" - Revelation 22:1-4 Pastor George Jensen speaking
	Jan. 21	8:00 am & 10:30 am	Sanctity of Life Sunday Message: "A Whole-Life Policy" - Psalm 90:1-17 Pastor George Jensen speaking
	Jan. 28	8:00 am & 10:30 am	Casting a Vision Sunday Message: "Whose Vision Should We Be Looking at?" - Romans 12:1-2 Pastor George Jensen speaking



SUNDAY SCHOOL FOR ALL AGES
SUNDAYS - 9:15 AM



7:00 PM

WHAT?	WHO?	WHERE?
Adult Bible Study	"The Revelation of Jesus Christ" - Led by Pastor Craig Debinski	Room #4 and Facebook Live
412 Youth	Youth - Grades 7-12	Room #3
Kids' Klub	A children's ministry with separate groups for PreK & Early Elementary (age 3-Gr. 2) and Older Elementary (Gr. 3-6)	Fellowship Hall



HAPPY NEW YOU!

Changing the calendar each January is a reminder that God makes all things new.

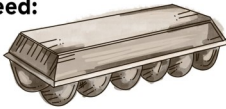
Directions: Use the clues and the calendar code to complete 2 Corinthians 5:17, ESV.



Geodes look plain on the outside but contain beautiful crystals. Create these "rocks" to show how God makes us new on the inside.

What you need:

- Clean cardboard egg carton
- Scissors (and adult help)
- Epsom salt
- Plastic zippered bags (one per color of dye)
- Food coloring
- Glue
- Paintbrush



What you do:

1. Cut out the tops and bottoms of all the egg compartments so you can make 6 ball shapes.
2. In each bag, put 3 tablespoons of Epsom salt and a drop or two of food coloring. Seal and shake to mix.
3. With the paintbrush, spread glue inside two egg-carton halves. Sprinkle a spoonful of Epsom salt into those halves. Then close and shake.
4. Open your homemade geode and shake out excess salt.
5. Optional: Preserve the crystals with a coat of clear-drying glue.



JANUARY 2024						
Sunday	Monday	Tuesday	Wednesday	Thursday	Friday	Saturday
	1	2	3	4	5	6
	God	night	word	in	love	Jesus
7	8	9	10	11	12	13
glory	therefore	speak	give	light	Christ	a
14	15	16	17	18	19	20
saw	beginning	anyone	waters	help	is	many
21	22	23	24	25	26	27
he	again	through	earth	made	while	back
28	29	30	31			
new	if	and	creation			

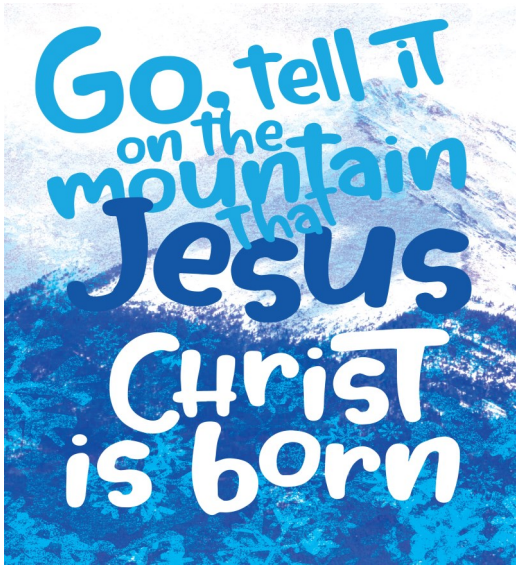


- The second Monday _ _ _ _ _
- The last Monday _ _
- The 16th _ _ _ _ _
- One day before the 20th _ _
- The day before the first Friday _ _
- The last weekday of the second week _ _ _ _ _
- The day after the 20th _ _
- The day after 18th _ _
- The first day of the second weekend _
- The last Sunday _ _ _
- The last day of the month _ _ _ _ _



Answers: Therefore, if anyone is in Christ, he is a new creation.





Puzzle!

Use the grid to discover what James 5:13-18 advises when challenges loom.

	A	F	L	P	T
	C	H	N	R	W
	E	I	O	S	Y

P

Answers: Pray in faith. Pray for each other. Pray earnestly.



Bible Quiz

In the book of Judges, the warrior Barak would go to battle only if a certain female leader went with him. Who was she?

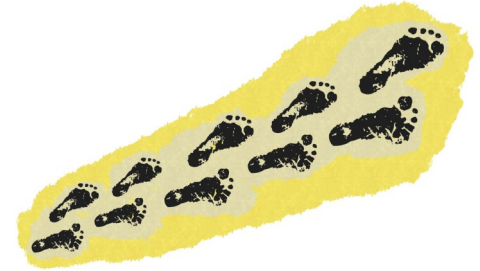
- A. Rebekah
- B. Jael
- C. Michal
- D. Deborah

Answer: D (See Judges 4:1-10.)

DEVOTIONS

for Spiritual Growth

(Continued from page 1.)



Resolve to go micro

Most New Year's resolutions are so major they seem made to be broken. Maybe that's why "micro-resolution" is the latest January buzzword. Setting smaller goals is more realistic and helps ensure follow-through, according to experts. People who try setting micro-resolutions say that approach is more positive and leads to longer-lasting change. For example, instead of attempting to lose 30 pounds this year, make a micro-resolution to walk 10 minutes twice per day and to snack on fresh fruit at least once a day.

Micro-resolutions can also be helpful in matters of faith. If aiming to read the entire Bible in one year feels overwhelming, take five minutes each morning and evening to read a brief devotional or pray. If joining your church's missions committee isn't possible, try to talk to one new person each week about your faith or church. May God bless you as you take small steps that add up to big impact this year!

First, contact

In *Unclean: Meditations on Purity, Hospitality and Mortality*, Richard Beck writes powerfully about Jesus healing a leper in Matthew 8:1-3. "What is intriguing about this story is the sequence. Jesus touches the leper first. Then the command 'Be clean!' is offered. That is, Jesus' first move is into ritual defilement. By first touching the leper, Jesus ... [is] standing in solidarity with the unclean." Beck finds this "striking" because typically we expect purification before contact. But Jesus' actions reverse the pattern: "Contact occurs first."

How fortunate for us, too, that God didn't wait to reach out to us until he had cleansed us of sin. God didn't save us from afar and only *then* come to live among us. Rather, "God shows his love for us in that while we were still sinners, Christ died for us" (Romans 5:8, ESV). And continuously, Jesus loves us, comes to us and touches our hearts, even when we are at our worst — straying from God, trapped in sin, unworthy, unclean, unrighteous. For it's not *our* righteousness or purity that heals and saves us, but Christ's.



The sermon from a given Sunday will be available on the web by the following Wednesday afternoon. Visit our website at www.enolacog.com, click on the "Message." box at the top of the home page.

ADULT BIBLE STUDY

**WEDNESDAY NIGHTS
7 PM**

**Leader:
Pastor Craig Debinski**



Pastor Craig leads our Wednesday Night Bible Study on the Book of Revelation. We will continue learning about the Second Coming of Christ, and the future Battle of Jesus & His army in the Valley of Armagedón against the Antichrist & his coalition of humanistic, world powers. The New Heaven & the New Earth is still yet future. Read ahead and get ready to explore what God declared that He's going to do on Earth, in Heaven and beyond.

BIBLE STUDY GUIDES ARE AVAILABLE:

All of the Revelation Bible Studies are numbered from 1-20. Copies of the entire series are available and are on display in the Church Living Room. Help yourself, and if there is one missing that you need, let Pastor Craig know. You may text/call him at 570-809-6871. These studies will assist you as you listen to the recorded Bible Study on our church's *Sonshine-TV* Channel, on You Tube.

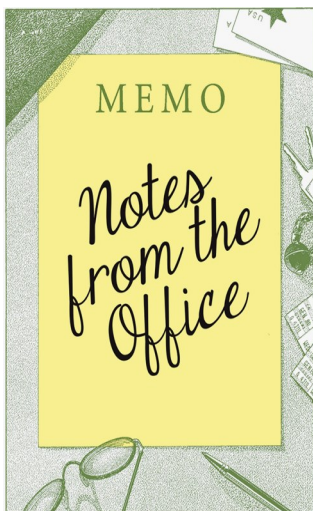
STAFF TIME AWAY IN JANUARY

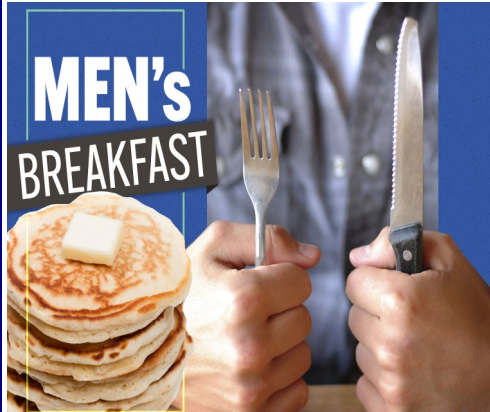
Please plan accordingly

Pastor George Jensen, Lead Pastor, remains on vacation **through Wednesday, January 3, 2023**. During this period, if you need pastoral assistance, simply call the church office and you will be given the names and numbers of the Elder Contacts who will help you.

Jill Kilker, Director of Youth & Children's Ministries, will be away at a Conference from **Tuesday, January 9 through Friday, January 12**.

Marilyn Zahora, Church Secretary, will be on vacation **January 29 through February 2, 2024**. On February 1, 2024 we will have regular office hours where another staff member will be available.





Men's Ministry Breakfast

Our next meeting will be:

Saturday, January 6

8:00 am - 9:00 am

Fellowship Hall

For more information, contact Dan Marrow or Pastor Joe Castanos.

ORDINANCE SUNDAY

January 7, 2023

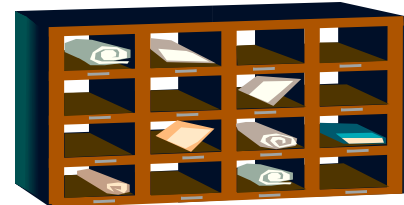
8:00 am & 10:30 am services



We will celebrate the Lord's Supper and Feetwashing at both services (8:00 and 10:30 AM) on Sunday, January 7. Come join with us and be blessed!



You've Got Mail



In order to keep up-to-date with the happenings here at Enola First Church of God, please remember to **check your mailbox each week**. For anyone who is a member / regular attender who does not currently have a mailbox and would like one, or if you currently have a mailbox but would prefer *not* to have a mailbox, please contact Amy Kreiger at akreiger@enolacog.com.

LADIES BIBLE STUDY

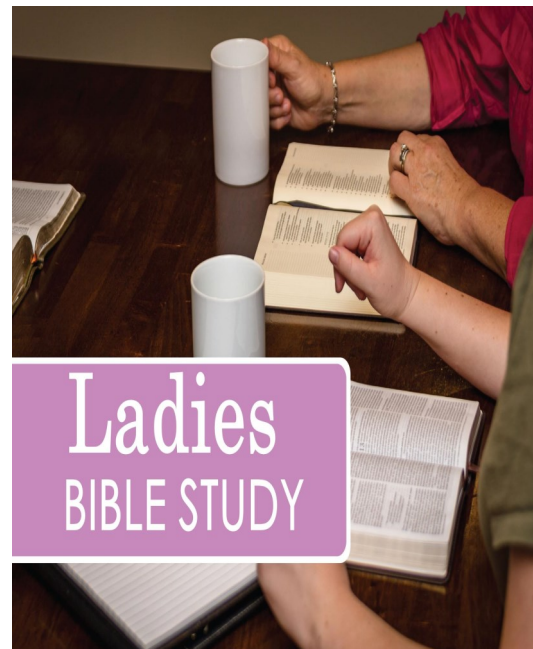
TUESDAYS at 10:00 AM

Lower Level Fellowship Hall

HEY LADIES!

As we start a brand New Year, we will also be starting a brand new study

beginning January 2, 2024



Titled:

PURSUING CONTENTMENT

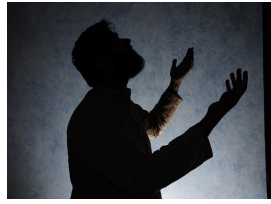
It is a 12 week study.

In this Women of Faith Bible study, we will examine how contentment is something that can be learned and how we can better allow God to cultivate a heart of peace and thankfulness within us.

We will be meeting each Tuesday morning at 10:00 AM in the lower level of the church.

ALL LADIES ARE WELCOME!

**Any questions, please call Kay Liddick at 717-732-5064
OR Email her at denkaylid@msn.com.**



Prayer, Fasting and Casting a Vision - UPDATE

by Pastor Jensen

The Administrative Board and the Vision Task Force continue to work together to dialogue about where God may be leading our congregation. The leadership identified these areas as initiatives that God may be calling us to pursue. These include 1) remodeling and expanding the Kitchen, 2) enhancing security measures during public events and 3) implementing some sort of alternative education program for parents who are looking for options beyond the public school system.

As we had reported previously, we received 47 responses to “The Samue School Survey” from the congregation. The Administrative Board has published the results of the survey along with some answers to common questions in this edition of The Sonshine News. To further test the feasibility of starting a small Christian Micro-School, we will host a “Tax Credit Informational Meeting” at 11:45 AM in the Fellowship Hall on January 21, 2024. At this meeting, representatives from “The Samuel School” will explain how Pennsylvania residents can designate their PA Income Tax to fund non-profit educational entities like “The Samuel School” through the Pennsylvania’s “Educational Improvement Tax Credits’ program. A light lunch will be served. Please sign up at Sign Up Central if you are interested in coming. There will also be a similar “Tax Credit Informational Meeting” for business owners on February 12, 2024 at 7:00 PM in the Fellowship Hall. As always, please continue to pray that we here at ECOG will be obedient to follow God’s vision. Pray that he will open doors of opportunities pertaining to those initiatives that are a part of His will and that He will shut any doors that are not a part of His Divine plan.



S.I.S.T.E.R.S. IN CHRIST

WHEN: January 15

TIME: 7:00 PM

WHERE: Fellowship Hall

WHO: All Women and young ladies' grades 7-12

Ladies, come and fellowship with other Christian women from our church as we enjoy snacks together and have a Bible study. The acronym S.I.S.T.E.R.S. stands for SUPPORT, INSPIRE, SERVE, TEACH, ENCOURAGE, RESPECT AND SHARE. If you have any questions, please feel free to call Crystal Hammond at 717-557-1842.



**PA Personal State Income Tax
Liability Program**

Informational Luncheon

Sunday, January 21, 2024

@ 11:45 AM

All Are Welcome!

You are invited to a "Tax Credit Informational Meeting" at 11:45 AM in the Fellowship Hall on January 21, 2024. Representatives from "The Samuel School" will be present to explain how Pennsylvania residents can designate their PA Income Tax to fund non-profit educational entities like a Christian Micro-school through Pennsylvania's "Educational Improvement Tax Credits" program. A light soup-and-sandwich lunch will be served by volunteers from our Tuesday Ladies' Bible Study. Your presence at this meeting will help us as a church determine if a Christian Micro-school ministry is financially feasible at this time at ECOG. Please sign up at Sign Up Central if you are interested in coming.

**2024
Church Officers**

Ruling Elders:

Dr. Craig Debinski
Mark Ensminger

Teaching Elder:

Pastor George Jensen

Deacons:

Joe Kilker
Rich Kreiger
Barry Miller
Curt Whitmer

Deaconesses:

Diana Bridges
Sherrie Kauffman
Dawn Little
Liz Swope

Conference Delegates:

Keith Gates
Sandy Gates

Doubling Gap Center's Winter Picnic



February 4,
3-7 p.m.

Dress for the theme by wearing hiking/camping clothes

Please Bring a Side Dish (in a disposable container) to Share

Last name starting with:

A-I: Salad (fruit/veg/potato/pasta)

J-Q: Dessert

R-Z: Salty Snack

Events for ALL Ages

3pm - Winter Sports, Camp Activities, Open Gym & Camp Store

4pm - Picnic Buffet

5pm - National Park Presentation

6pm - Devotions & Snack!

SNOW & INCLEMENT WEATHER CANCELLATIONS

WINTER 2023-2024

Below is a list of information sources to find out if a service or church event is cancelled due to snow or inclement weather. Please note: Every effort will be made to announce Sunday morning cancellations by 6:00 am.



TELEVISION – CBS-21

INTERNET - www.enolacog.com, www.abc27.com, www.local21news.com.

TELEPHONE – 732-4253 (listen for a message)

FACEBOOK – ECOG Enola First Church of God Facebook page

*Note: In rare instances, a Sunday-morning cancellation may occur after 6:00 am. **You may sign up at "Sign Up Central" to be notified of post-6:00 AM cancellations by telephone.** Even if you signed up for post-6:00 AM phone calls in a previous year, you must do so again for the 2023-2024 winter season. Please be aware that such phone calls will only be made for post-6:00 AM Sunday morning cancellations. Phone calls will NOT be issued for Sunday morning cancellations occurring before 6:00 AM.*

Samuel School Survey Results – 47 Responses Total
 23 Paper Responses (49%), 24 Online Responses (51%)

Question 1:

Do you believe it is a good decision to open a Christian school at Enola Church of God for the purposes of Christ-centered education? (43 responses – 91%)

Yes – 39 (83%), No – 4 (8.5%), No Response – 4 (8.5%)

Question 2:

Do you know of any children who would be sincerely interested in enrolling if indeed we open a school here? If so please provide their names and grades below. (14 responses – 30%)

I do not have any specific names

No

We do not know of any children interested.

no

No

Absolutely not

Great grandkids Hayden and Xander

No

Andrei Benner, Nico Benner

No

N/A

Paul Kline (7th grade), Nicole Kline (5th grade), Brandon Kline (2nd grade)

No

Kline Family

Question 3:

Do you know of any adults that would be interested in serving at our school, in either a volunteer or paid capacity, as an administrator, teacher, assistant teacher, secretary, or classroom helper? If so, please provide their name, contact information and their position of interest. (13 responses – 28%)

George Jensen, 717-580-7390, part-time or substitute math teacher

no

We do not know of anyone interested in these roles. We do know that the church has struggled with current teacher and observer positions. So this would increase the burden on the same few. More detailed job descriptions including salary and benefits would be needed before interest could be determined. Would this school have tuition requirements to pay for these positions? How would the financing be determined?

Rubina Arshad, 717-440-4545 as a helper

Dan Marrow - Counselor-

No

Kathy Liddick, I may be interested in helping out.

NA

No

Craig Debinski 570-809-6871 Bible Teacher

No

No

No

- continued -

Samuel School Survey Results – 47 Responses Total
 23 Paper Responses (49%), 24 Online Responses (51%)

Question 4:

Are you interested in hearing more about how you can have your business or personal state income tax liability sent to a Christian school of your choosing rather than the state? (32 responses – 68%)

Yes – 14 (30%), No – 18 (38%), No Response – 15 (32%)

Question 5:

If you answered "Yes" to the last question, please give us your name and phone number. (8 responses – 27%. Contact information responses are not listed on this report but are recorded in the original survey database)

Question 6:

Are there any concerns or comments you have regarding the potential opening of a school here at Enola Church of God that you would like brought to our attention during this consideration process? (18 responses – 38%.

Note that the last two responses are identical; it is unknown if two persons responded in the exact same fashion or if one person accidentally opted for their responses to be recorded twice)

None

My biggest concern is space. Do we have enough bathrooms? Can events like ladies Bible study still happen? What about funerals? If they want a meal afterwards can that be worked out? I understand people cannot enter the area of the school without being part of the school program will the church people be put off by not having the church available? I think it is a wonderful. Idea just not sure if our facility is the best

Concerns include:

Details regarding structure and curriculum

What would be the capacity of enrollment--renovations needed?

Legal ramifications with liability etc.

Office space and equipment needed.

State regulations including teacher qualifications

Samuel School and Homeschool co-op would be different entities so how would that be determined

Supplies for school would come from what budget?

What timeline is being considered?

Has the church been contacted that there is a need prior to this survey?

More specifics are needed to provide an informed answer to the first question.

We would be really happy if a school opens up, and tell more family and friends about this.

My only concern is that we have somewhat limited space to provide a school program; however, I have not been privy to closed meetings regarding the genesis of this venture.

Believe the present public school system is definitely on a downward slide & people need an alternative.

No - It's a great idea and very much needed.

I firmly believe in the separation of church and state. Education must prepare students for the world out there. Students spouting "Christian" stand on science and history does not qualify as an education. Shame on you!

It's a great idea. I support a Christian school. Would there be a music and gym for the kids?

No

- continued -

Samuel School Survey Results – 47 Responses Total
 23 Paper Responses (49%), 24 Online Responses (51%)

Question 6 (continued):

Are there any concerns or comments you have regarding the potential opening of a school here at Enola Church of God that you would like brought to our attention during this consideration process? (18 responses – 38%.

Note that the last two responses are identical; it is unknown if two persons responded in the exact same fashion or if one person accidentally opted for their responses to be recorded twice)

I hope we can get things moving along and make progress at a faster rate. I am extremely excited. I wish we had school at church already, thus my 4 year old could attend preschool. Right now, he is not attending any preschools because the schools don't provide rides and it's further away.

No

[A post card was presented with the name, "Heather N. Boss" / @heatherbossministries / www.heatherbossministries.org. Then, the following comments were given:] She started a private school at her church. She may be a resource! She was the speaker at the Women's Ministry retreat this year.

How would the revenue for the Staff's salaries be funded? Can our church afford the salaries, insurance and have enough volunteers to support opening a Christian school?

None

[For Question #1, the participant put a question mark between "Yes" and "No"]

I'm not sure that our facility is large enough in terms of classrooms and needed storage space for supplies, etc.

-Can we afford the added expenses that this would incur from more maintenance, utilities, increases insurance?

-Noise for staff? -Access for members needing to come into building during hours - security could limit this?

-How do we handle funerals - lunches and other possible uses sometimes needed? -Ladies Bible Study?

In understand the need and agree that public schools are a major problem. Just not very confident that our facility is well suited.

The church has become pro home schooling, those who don't home school their children are cast off as being too worldly, while those who do homeschool are celebrated. My fear is that the children who don't attend the churches school will be even more cast away, and more favorites will be played to those students who do attend. I also don't understand where the money is going to come for this to be built. Where are the teachers, principals going to come from? There is a teacher shortage, and I don't feel that starting a school is going to help anything.

The church has become pro home schooling, those who don't home school their children are cast off as being too worldly, while those who do homeschool are celebrated. My fear is that the children who don't attend the churches school will be even more cast away, and more favorites will be played to those students who do attend. I also don't understand where the money is going to come for this to be built. Where are the teachers, principals going to come from? There is a teacher shortage, and I don't feel that starting a school is going to help anything.



Samuel School Survey - Answers to Common Questions

Is a Christian Micro-school initiative feasible in our church in lieu of the fact that it has been challenging to fill current teacher and observer positions?

The school's staffing needs would be largely independent of the church's. Although the school would accept volunteer help, the main positions (teachers and staff) would be paid. The recruitment and selection of professional employees would be the responsibility of those overseeing the school. It would not be the responsibility of ECOG's leadership (unless leaders choose to be involved with the school).

Would the school have tuition requirements? Would tuition be used to pay the wages of those working for the school?

The families of participating students would be required to pay tuition. The tuition received, along with two other income streams (see the reply to the next question), would be used to pay the wages of school employees.

How would the school be financed? How would school supplies be paid for?

As mentioned, families of participating students would be required to pay tuition. This would be one stream of income. The second stream would be regular or occasional donations from people passionate about the Micro-school ministry. The third stream would be through Pennsylvania's Personal State Income Tax Liability program. In a nutshell, businesses, and households (within and outside of our church) who earn at least \$40,000 per year could designate that most of their PA State Income Tax Liability be designated to the Micro-school. As incredible as it sounds, this is a program sanctioned by the State of PA. Many qualified non-profit organizations currently benefit from this program. The Micro-school would be qualified to be such a recipient. School supplies would be paid for through these three streams of income.

Do we have enough space for a Christian Micro-school?

Due to the small number of students attending such a Micro-school, we are hopeful that there will be enough space. However, more research and thinking will need to take place to be sure this is so. Initially, the goal is to reconfigure some areas in our facilities to accommodate the school. We are also considering some initiatives to create more space. Take storage, for example. We may use the garage to store tables and chairs which are currently housed in Room #6 of the Lower Level. Currently, the tractor and other tools are housed in the garage. A storage shed could be erected next to the garage to accommodate the tractor and some of the tools. This is an example of one option among many being considered.

What renovations to the current facilities would be needed? Do we have enough bathrooms?

We recently had a visit from East Pennsboro Township officials. The number of bathrooms in our facilities is adequate for a micro-school of 15-20 students according to Township requirements. At this point, some minor renovations to the facilities would be required including: 1) Placing vertical ("swing") bars next to commodes in the Lower-Level restrooms to assist handicapped persons. 2) Installing flashing lights next to fire alarms for the sake of the hearing impaired. 3) Installing an additional fire alarm (and flashing light) in the Lower-Level hallway so that they are near the classrooms. Further, since we would be operating a school, some sort of mag-lock system would need to be installed on the main Lower-Level doors for security purposes.

Samuel School Survey - Answers to Common Questions (*continued*)

Would we still be able to hold Ladies' Bible Study?

YES! We have no intention of doing away with our current ministries (such as the Ladies' Bible Study) to host a Christian Micro-school. Numerous options are being considered. One option would be to utilize the upstairs Lobby for Ladies' Bible Study. A second option would be to reconfigure the Sanctuary so that it could be used for Ladies' Bible Study. This option would involve replacing the pews (all or at least some of the pews) with quality chairs which could be reconfigured for various events. In the case of the Ladies' Bible Study, chairs moved from rows configured in the Sanctuary and placed around a set of tables. The third option would be to keep the Ladies' Bible Study in the Fellowship Hall and have students stay in rooms during that time (except for recess and bathroom breaks).

What about funerals? Could we host funerals in the Sanctuary and luncheons in the Fellowship Hall afterwards?

Yes. We would direct the school to build several "funeral days" into their schedule just as schools do with "snow days." Should the facilities be needed for a funeral and luncheon, school would be cancelled on that day.

Would members be restricted from having access to the building while school is in session?

No. Members and attendees would be allowed to come to visit the office, get their mail, pick up chancel flowers, give offering, etc. Obviously, members and attendees would not be permitted to go into classrooms and interrupt instruction but we doubt that this would be a problem.

Would more office space and equipment be needed? What about noise for staff?

To make the building more functional for both church and school to operate during the week, one option being considered is to turn the Chapel and Upper Room into common office areas for the church. The Chapel, which is largely underutilized, could be used as a common office area. The Upper Room could be used as a private office/meeting area for staff or volunteers to meet confidentially with people (as it is currently being used). Under this concept, most church-related business matters during the week could take place on the upper level. The current offices on the Lower Level could be used for storage and office areas by the school. This would largely solve the "noise for staff" concern. Again, this concept of moving the church offices to the Chapel and Upper Room is only a consideration.

What can you tell us regarding the school's structure and curriculum?

The school would operate under a "Hebrew" model of education. While there certainly are standards under this model, the curriculum is designed to serve individual students according to their unique giftings and passions according to the way God created them. Structure-wise, to a certain extent, the school would look a bit like the "one-room schoolhouse" of yesteryear where students would assist in teaching other students. This method is also used in public schools—it is referred to as "cooperative learning." Ultimately, teachers would do the bulk of the teaching. The curriculum would be determined by the school administration. Most likely, it would be selected from various Christian-school or home-school curricula options available that have proven to be most effective.

What would be the capacity of enrollment?

Currently, it is advised that a Christian Micro-school not exceed a total of 20 students.

Samuel School Survey - Answers to Common Questions (*continued*)

What are the legal ramifications with liability, etc.?

The school would need to purchase all necessary insurances (including liability) paid for through the three streams of income mentioned previously. It is possible that there could be an impact on the cost of ECOG's insurances pertaining to the church since we are hosting the school, but this is yet to be determined.

What are the state regulations including teacher qualifications?

Surprisingly, the regulations are not very great. Teachers do not need to be certified although certified teachers would certainly be considered for hire.

What timeline is being considered?

That is yet to be determined. We want to be sure that this initiative is both feasible and in line with God's will. Humanly speaking, the absolute earliest a Christian micro-school could open would be in the Fall of 2024; it is very likely that it could not happen until the Fall of 2025.

Can the church afford the salaries, insurance and have enough volunteers to support opening a Christian school?

No, the church cannot afford such expenses nor is it likely that the church can produce the number of volunteers that would be needed. However, the school itself, through the three streams of income would be able (in principle) to afford all such expenses. Volunteers from ECOG would be welcome but would not be necessary. One effective way to recruit help is to offer participating families tuition discounts for time volunteered at the school.

Would there be a music and gym for the kids?

Music – yes. Gym – No (that's because we don't have a gym). Physical activity would take place outside by way of sports and games in the parking lot or up on the field. In Pennsylvania, recreational activities and recess may occur outside provided the temperature is at least 40 degrees Fahrenheit. On bitter cold or inclement days, the Fellowship Hall could be used for some low-impact physical activities.

How would the students be served lunch? Would the school staff be making lunches in the church kitchen?

Students would do as they did back in the old days. They would bring their own lunch (a.k.a., they would "brown-bag" it).


So, we're talking about hosting a small "no-frills" school with a tiny enrollment, no gym class and no lunch served?

That's right! If it sounds like it may be a "flop" from the get-go, consider this: Some students do not fare well (educationally-speaking) in a large public school. Further, some families are concerned with the poor academics in their given school. Others have found that the values their children are taught in their school conflict with our Christian principles. Such families have the option of sending their children to a large Christian or private school, but this can be expensive. Others are concerned that cyber-school is not a good option (for various reasons). Homeschooling can be very challenging for parents who are not "natural" teachers. The Christian Micro-school offers yet another option. According to the survey results and from conversations being held among people here at ECOG, it appears that eventually, we would be able to operate a full-to-capacity, successful Christian Micro-school.



ECOG is on Facebook!

Go onto Enola First Church of God's Facebook page and let the world know that you "like" it! By the way, if you're not on Facebook, you can still check out the church's page.




BLOOD PRESSURE

**Next screening:
Jan. 28**

Blood Pressure Screenings are typically held on the last Sunday of each month in the Upper Room immediately after the 8am service and at 10:15am. If any healthcare professionals or students are interested in helping, please see or contact Pat Watson at pwatson4@verizon.net.

New Hope Ministries is in need of toiletries!


This can include any of the following items for example: Toilet paper, shampoo, soap, lotions, conditioner, female sanitary products, toothpaste, tooth brushes, dental floss, hand soap and hand sanitizer, wipes, diapers, baby products, shaving cream and razors, deodorant, brushes and combs, mouth wash, first aid items, Q-tips, scissors, tweezers, and nail clippers. Drop off any items at the lower entrance in the shopping cart! Thank you for your generosity!



Sharing Christ's love by meeting human needs

Feed My Starving Children Packing Event

Turning Point Church of God is hosting a packing event to pack meals for Feed My Starving Children. The Dates are **March 7, 8 and 9**. Shifts are Thursday evening 6-8, Friday 12-2, 3-5 and 6-8 and Saturday 9-11, 12-2 and 3-5. Sign up is available at "Sign-Up Central". It is important you sign up early since shifts (especially Friday night and Saturday morning) fill up fast.





PRAYER SERVICES

Prayer services are scheduled to continue Sunday evenings. They are held in the Chapel for the purpose of praying for the purpose, vision, and ministries of the Enola First Church of God along with the needs of those joining for prayer. On many Sunday evenings, you can join in by Zoom. The ministry is coordinated by the Elders with various gifted teachers within the church serving as devotional leaders at each service. Looking ahead, prayer Services will be held most Sunday evenings except for holiday weekends and when other events are scheduled. Log onto our online calendar at www.enolacog.com to see if a Prayer Service will be held on a given Sunday evening. Remember, “the prayer of a righteous person is powerful and effective.” (James 5:16)

~ 2024 Sanctuary Flowers ~

To place flowers in the Sanctuary in honor or in memory of someone on a given Sunday, please **sign up on the chart located on the wall in the Living Room (near the elevator)**. The cost is \$35.50 per vase. Your payment can then be put in an envelope and dropped in an offering box. The Secretary will order flowers for the Sunday indicated. You are welcome to take them home after that Sunday's services.



Meals Ministry Available

The Lamplighters are pleased to offer a Meals Ministry. Thanks to all of our volunteers who make this possible! We appreciate your willingness to help our church members in need! If you would like to volunteer, please sign up at “Sign-Up Central”.



If you are ill, recovering from a surgery or debilitating illness, or other challenging circumstance, please contact the church office at 717-732-4253 to request this service. We will reach out and schedule your meal delivery. This will likely be every other day for a set period of time. If you are ill with a contagious condition like Covid or Flu, we will need to leave food in a safe manner at the door. **A request form can be downloaded from our website at enolacog.com/meals-ministry.** For more detailed information, please contact Pat Watson at 717-979-0219 (text or call) or email pwatson4@verizon.net.

OFFERING PLATE CHANGE

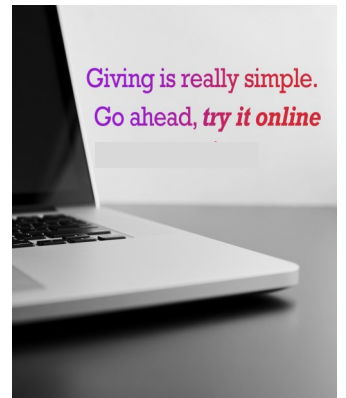
Please be aware that those of you who place money in the offering plates at the back of the sanctuary during the Sunday school hour will need to either place it in one of the metal wall boxes in the entry way (upstairs and downstairs) or hold it until the greeters arrive for the 10:30 service. The offering plates will be turned upside down to remind you to place it in one of the metal wall boxes. The greeters will turn the plates over to receive offering. The change is being requested by the Administrative Board. Thank you!



Online Tithing is Available

More and more of our members are using online bill paying these days instead of traditional check writing. To support this trend, our Stewards team made possible the availability of tithing using an Internet application or a mobile device via Vanco.

Information and instructions about online giving has been posted to our Enola COG website. Questions on online tithing can be directed to our Treasurer, Amy Kreiger. Thank you.



WEEKLY OFFERINGS SUMMARY

DATE	OFFERING	BUILDING FUND
11-26-23	\$4,020.50	\$88.00
12-03-23	\$15,886.00	\$124.00
12-10-23	\$11,353.60	\$45.00
12-17-23	\$4,734.00	\$102.00
12-24-23	\$12,5587.40	\$159.75



General Fund Status		
	November 2023	Year to Date
Income	\$24,044.00	\$300,469.00
Expenses	\$30,138.00	\$315,932.00



Camp YoliJwa Update January 2024

WINTER PICNIC

WINTER PICNIC
 Sunday, February 4 ♦ 3-7 p.m.
 Games ♦ Open gym ♦ Winter sports
 Enjoy a supper with meat & drink provided by the Camp. Bring a side dish or dessert to share. Join in the spirit by dressing for the winter theme. Stay tuned for more details or contact the camp!



YOUNG ADULT RETREAT

We are excited to offer a retreat opportunity for anyone post high school to 30 years old! Participants will enjoy times of worship, Bible study, breakout sessions, fellowship, and more! We'll see you February 16-18!



Keep up with camp news through YoliJwa's Facebook and Instagram pages.

- Receive weekly updates from Camp
- Events and other important info right at your fingertips
- Connect with Camp friends!



CAMP COUNSELOR?

Over 350 persons are needed each summer as volunteer counselors for at Camp YoliJwa! Responsibilities include leading a group of 6-7 campers through the day's activities, leading devotions and keeping campers involved in the program. Age 16 or older. Applications available at www.campyolijwa.org.

CAMP HOPE

Camp HOPE
 June 2-7
 A week designed for intellectually disabled adults. Call the Camp for a brochure. Register early! Camper spaces are limited. Consider counseling! Male & female counselors are always needed for this rewarding week.



For more information or a brochure, visit our Camp YoliJwa Bulletin Board located in the Fellowship Hall in the Lower Level of the Church.



412 YOUTH NEWS

The 412 Youth is a vibrant, active group that meets each Wednesday evening from 7-8 p.m, September through May. We also meet throughout the year for various activities and exciting events! Bring your friends!

UPCOMING YOUTH GROUP ACTIVITIES/EVENTS:

January 27, 2024—Pancake Breakfast. Tickets will go on sale on December 31st. Unsold tickets and money are due on January 21st. Youth must arrive at the church at 7:15 a.m. to help with this event.

February 2-4, 2024—Youth Group Retreat at Sandy Cove Ministries. Please meet at the church at 4 p.m. on Friday. We will return on Sunday afternoon. We will have a fun weekend of Bible study, swimming, games, crafts, and fellowship on the beautiful Chesapeake Bay.

March 16, 2024 at 9 a.m.--Sandwich Making in the Fellowship Hall

March 17, 2024 — Sandwich Orders can be picked up after first service, Sunday school, or second service.

June 29, 2024: (Fellowship Hall)

1-3 p.m.--Boot Camp Training (Mandatory for all of those participating in the mission trip)

3 p.m.--Mission Trip Parents' Meeting

July 20-27, 2024—Youth Mission Trip to Hooghan Nizhoni, NM.

Sunday, August 4, 2024 — Mission Trip Recap Services and Reunion Lunch.

All youth and parents are encouraged to see one of the Youth Service Team members if you have questions. They are: Joe & Jill Kilker, Sherrie Kauffman, Elizabeth Dreibelbis and Diana Bridges.

JANUARY

Birthdays and Anniversaries



4 Keatha Dengler

25 Shawn & Kathy Chegwidden

6 Shawn Chegwidden
Stacie Ensminger

07 Linda Jones

10 Shirley Campbell

11 Keith Gates

15 Bud Whitaker

17 Don Morgan
Elizabeth Williams

23 Linda Chappie

25 Deloris Freeman

28 Marlene Whitaker

NOTE: If you have any birthdays or anniversaries that we may have missed or if your birthday or anniversary is incorrect, please notify Marilyn Zahora at 717-732-4253 or via e-mail at mzahora@enolacog.com. Thank you!



Help us make this **YOUR** newsletter! People like to see events being planned and also hear about things that have happened. Please submit any articles to Marilyn, the Church Secretary via email at mzahora@enolacog.com, **by the 15th of each month**. Thank you!

Enola First Church of God

9 Sherwood Drive
Enola, PA 17025

Phone: 717-73 BIBLE (732-4253)
Fax: 717-732-4875
E-mail: ecog@enolacog.com



Enola 1st Church of God

We serve as a Lighthouse of God to guide people to salvation in Jesus Christ. Worship, love, encouragement, and biblical teaching are the foundation by which we prepare people to face the storms of life.

Reflecting God's Light

Enola 1st Church of God

WWW.ENOLACOG.COM

We serve as a Lighthouse of God to guide people to salvation in Jesus Christ. Worship, love, encouragement, and biblical teaching are the foundation by which we prepare people to face the storms of life.



Reflecting God's Light