



Reflecting God's Light

Volume 19, Issue 3

March, 2025

We serve as a Lighthouse of God to guide people to salvation in Jesus Christ. Worship, love, encouragement, and biblical teaching are the foundation by which we prepare people to face the storms of life.

The SonShine News

Enola First Church of God

DEVOTIONS for Spiritual Growth



The Lenten desert

During the Lenten season, which begins on Ash Wednesday (March 5 this year), Christians figuratively follow Jesus into the desert. Just as our Savior spent 40 days fasting and facing temptation, we focus on self-reflection and contrition.

In an 1873 hymn, Claudia Hernaman wrote, "O Lord, throughout these forty days, you prayed and kept the fast. Inspire repentance for our sin, and free us from our past."

The desert experience of Lent serves a clear purpose, filling us up rather than depleting us. "This is what Lent is meant to be," writes theologian Ron Rolheiser. "Time in the desert to courageously face the chaos and the demons within us and to let God do battle with them through us. The result is that we are purified, made ready, so the intoxicating joy of Easter might then bind us more closely to God and each other."

(continued on page 5)

STAFF:

George C. Jensen, Lead Pastor
gjensen@enolacog.com

Sandra Baney, Director of Discipleship Ministries
sbaney@enolacog.com

Jill Kilker, Director of Children & Youth Ministries
jkilker@enolacog.com

Amy Kreiger, Administrative Assistant
akreiger@enolacog.com

Marilyn Zahora, Secretary
mzahora@enolacog.com

Inside this issue:

Devotions	15
Kids Page	3
Sermon Series	4
Men's Ministry Breakfast	6
Ladies Bible Study	7
Youth Sandwich Sale	7
Meet & Mingle Luncheon	8
Feed My Starving Children	9
Microschool Launch Sub Task Force	10-11
Coffee House	12
Community Lenten Luncheons	13
Easter Tulip Orders	14
ERC Sessions	15
Staff Time Away	18
Inclement Weather	19
Monthly Treasurer's Report	20
Camp YoliJwa Update	21
412 Youth News	22
Birthdays & Anniversaries	23
Calendars	Insert



Worship SCHEDULE



Date	Service	Theme/Message
Mar. 2	8:00 am & 10:30 am	Amos: A Wake-Up Call From God <i>The Nature of the Coming Judgment on Israel (Ch. 8-9) - Devastation and Destruction Will Come</i> "What a Mess!" - Amos 9:1-10 Pastor George Jensen speaking
Mar. 9	8:00 am & 10:30 am	Amos: A Wake-Up Call From God <i>The Call for the Restoration of Israel (Ch. 9) - God Will Restore His People, Israel</i> "In the End, God's Gonna Bless!" - Amos 9:11-15 Pastor George Jensen speaking
Mar. 16	8:00 am & 10:30 am	Losers Are Finders "Lose Your Privileges" - Matthew 16:25 Pastor George Jensen speaking
Mar. 23	8:00 am & 10:30 am	Losers Are Finders "Lose Your Power" - Colossians 1:28-29 Pastor George Jensen speaking
Mar. 30	8:00 am & 10:30 am	Losers Are Finders "Lose Your Pass" - Philippians 3:1-11 Pastor George Jensen speaking



Sunday School

SUNDAY SCHOOL FOR ALL AGES
SUNDAYS - 9:15 AM



WEDNESDAY EVENING ACTIVITIES




7:00 PM




WHAT?	WHO?	WHERE?
Adult Bible Study	"Tools and Resources to assist in Bible Study" - Led by Pastor Dan Marrow	Chapel and Facebook Live
The Sonshine Crew	Adults with Intellectual Disabilities	Sanctuary
412 Youth	Youth - Grades 7-12	Room #3
Kids' Klub	A children's ministry with separate groups for PreK & Early Elementary (age 3-Gr. 2) and Older Elementary (Gr. 3-6)	Fellowship Hall



sweet soil



This snack's layers mimic properties of our planet's crust.




What you need:

- 1 cup rolled oats
- ½ cup nut butter (divided)
- ½ cup chocolate chips
- Microwave-safe bowl
- Silicone mini baking cups

What you do:

1. Combine the oats and ½ cup of the nut butter. Mix until oats stick together.
2. Place 2 teaspoons of oat mixture in each baking cup. Press with a spoon. Freeze for 10 minutes.
3. Spread remaining nut butter atop the cups. Freeze for 10 more minutes.
4. Microwave the chocolate chips 30 seconds. Stir and keep heating for 30-second intervals until melted.
5. Spread melted chocolate atop the cups. Freeze until chocolate is firm.
6. Remove from the molds and enjoy! Refrigerate leftovers in an airtight container.



PUZZLE



FROM WORD TO WORLD

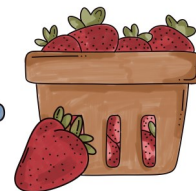
Words are important! God spoke and created all things.
What does the psalmist declare about creation?

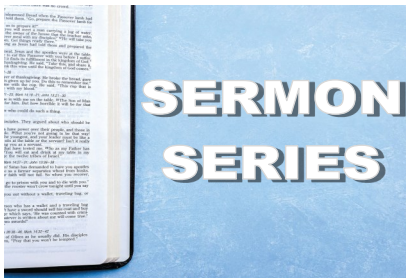
Directions: Using the word clues, unscramble the letters to complete Psalm 102:25, NIV.

A preposition	NI	--
An article	HTE	---
Genesis means this	NINBGEIGN	-----
A second-person pronoun	OUY	---
Past tense of to lay	IDAL	----
An article	HET	---
A plural noun meaning <i>base</i>	SODTAINFONU	-----
A preposition showing possession	FO	--
An article	TEH	---
A concrete noun meaning <i>world</i>	HRTEA	-----

Psalm 102:25, NIV

Answer: In the beginning you laid the foundations of the earth. (Psalm 102:25, NIV)





AMOS: A WAKE-UP CALL FROM GOD

Pastor Jensen will wrap up the Amos message series at the 8:00 and 10:30 AM Worship Services in March. Below is an outline of the remaining general and specific themes in the book of Amos that we will continue to cover along with message titles and Scripture references.

Ch. 8-9 – The Nature of the Coming Judgment on Israel

God's Word Will Be Absent

"Not. One. Word." – Amos 8:11-14

Devastation and Destruction Will Come

"What a Mess!" – Amos 9:1-10

Ch. 9 – The Call for the Restoration of Israel

God Will Restore His People, Israel

"In the End, God's Gonna Bless!" – Amos 9:11-15

* * * * *



LOSERS ARE FINDERS

This March and April, Pastor Jensen will present a thematic message series at the 8:00 and 10:30 AM Worship Services entitled, "Losers Are Finders." This series focuses on the biblical principle of "surrender" based on Jesus' words in Matthew 16:25 – "For whoever would save his life will lose it, but whoever loses his life for my sake will find it." As Christians, we should strive to totally surrender every part of our lives to the Lordship of Jesus Christ. There are many things we try to hold back or keep. Surrendering our lives to Christ involves LOSING those very same things. As we strive to do that, we will FIND a richer, deeper and more fulfilling life in Christ. Below is an outline containing the messages that we will cover in this series. Just in case anyone is leery of this message series because it encourages us to be "losers," just remember this: In Christ, when you strive to be a loser, you find a more abundant life in Him which makes you a winner!

"Lose Your Privileges" – Matthew 16:25

"Lose Your Power" – Colossians 1:28-29

"Lose Your Pride" – 1 Corinthians 10:23-31

"Lose Your Pass" – Philippians 3:1-11

"Lose Your Priorities" – Mark 12:28-34

"Lose Your Purpose" – Genesis 12:1-5



The sermon from a given Sunday will be available on the web by the following Wednesday afternoon. Visit our website at www.enolacog.com, click on the "Message." box at the top of the home page.

DEVOTIONS

for Spiritual Growth



(Continued from page 1.)

Amid life's storms

The hurricanes that battered the East Coast in fall 2024 also battered my soul. I was over the rain and humidity. I was tired of lugging my two preschoolers through the downpours and driving through flash floods at night. Yet I had no reason to complain. Our house was still standing, with no damage.

The news around us was worrying and heartbreaking. “What if that was us?” I wondered. “Would I be strong enough?”

Then the kids asked to play outside. Even though I knew they’d get wet and muddy, I gave in. When a rainbow appeared, I’d never been more humbled as I remembered: I don’t need to be anxious. I don’t need to be strong enough. God watches over us all. He knows the hurt and sorrow. And he promises to be “our refuge and strength, a very present help in trouble” (Psalm 46:1, ESV).

Lord, forgive my unbelief. “Hear my cry, O God ... when my heart is faint. Lead me to the rock that is higher than I” (Psalm 61:1-2, ESV).
—Kristen Greene

Jesus, the model of salt and light

In Matthew 5:13-16 Jesus tells his followers, “You are the salt of the earth. ... You are the light of the world.” Through his example, our Savior showed us what that means.

“The remarkable thing is that Jesus brought it all into reality in his own person,” writes Bible scholar N.T. Wright in *Matthew for Everyone*. “He was the salt of the earth. He was the light of the world: set up on a hilltop, crucified for all the world to see, becoming a beacon of hope and new life for everybody, drawing people to worship his [F]ather, embodying the way of self-giving love which is the deepest [fulfillment] of the law and the prophets.”

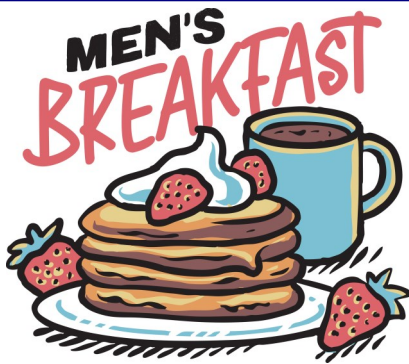
A Lamplighter Devotion:

The devotion of hearing

Speak; for Thy servant heareth. 1 Samuel 3:10.

Because I have listened definitely to one thing from God, it does not follow that I will listen to everything He says. The way in which I show God that I neither love nor respect Him is by the obtuseness of my heart and mind towards what He says. If I love my friend, I intuitively detect what he wants, and Jesus says, “Ye are My friends.” Have I disobeyed some command of my Lord’s this week? If I had realized that it was a command of Jesus, I would not consciously have disobeyed it; but most of us show such disrespect to God that we do not even hear what He says, He might never have spoken.

The destiny of my spiritual life is such identification with Jesus Christ that I always hear God, and I know that God always hears me (John 11:41). If I am united with Jesus Christ, I hear God by the devotion of hearing all the time. A lily, or a tree, or a servant of God, may convey God’s message to me. What hinders me from hearing is that I am taken up with other things. It is not that I will not hear God, but that I am not devoted in the right place. I am devoted to things, to service, to convictions, and God may say what He likes but I do not hear Him. The child attitude is always “Speak, Lord, for Thy servant heareth.” If I have not cultivated this devotion of hearing, I can only hear God’s voice at certain times; at other times I am taken up with things—things which I say I must do, and I become deaf to Him, I am not living the life of a child. Have I heard God’s voice to-day? - Oswald Chambers



Men's Ministry Breakfast

Our next meeting will be:

Saturday, March 1

8:00 am - 9:00 am

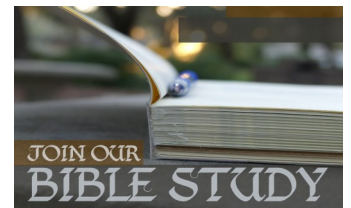
Fellowship Hall

For more information, contact Dan Marrow.

ADULT WEDNESDAY NIGHT BIBLE STUDY

Wednesdays at 7 pm

Leader: Dan Marrow



I can remember being in a Bible Study, answering questions designed by some famous theologian, and wondering, where did he/she come up with this question and, how did they expect us to understand it? That dynamic created a frustration that triggered thoughts of, "Do I really want to continue getting anxious doing something that is supposed to help me find peace?" I remember having a strong desire to know more about the Bible and how to research topics that interests me.

It is essential for every Christian to know how to study the Bible to find and understand more and more about God and His plan for the world He created, and how each of us fits into his plan. One should be able to dig into God's Word to gather and gain all the riches the Bible contains. I often combine two of my favorite verses that motivates me to grab a cognitive shovel and dig into the Word of God: Ps 119:105- Thy Word is a lamp unto my feet and a light unto my path... and 1 Peter 1:13a – "Prepare your mind for action...".

Come learn the tools and resources for study that will assist you to gain increasing knowledge of our Lord and Savior, which will enhance your relationship with Him and increase your faith.



SUNDAY EVENING PRAYER SERVICES

7:00 PM

Feel free to join us in the Chapel or on Zoom. The Zoom link will be provided on www.enolacog.com and our Church Facebook page. We hope you will join us for fervent, effectual prayer Sunday evenings this Fall as we pray for revival, the mission and vision of our church and other prayer concerns.

LADIES BIBLE STUDY

**TUESDAYS AT 10:00AM
FELLOWSHIP HALL**



WALK IN THE LIGHT

Centuries ago, the apostle John wrote to new believers to instruct them in how to live Godly lives. Today, John's words still hold truth and power as we struggle and triumph in our desire to "WALK IN THE LIGHT" with God and others. 1. 2. 3. JOHN: HOW SHOULD A CHRISTIAN LIVE? Invites us to grow in maturity as God's children while we learn more about what it means to live a radically transformed life.

ALL LADIES ARE WELCOME.

Any questions?

Please contact Kay Liddick at denkaylid@msn.com or 717-732-5064.

YOUTH SANDWICH SALE

(to support the 412 Youth Group)

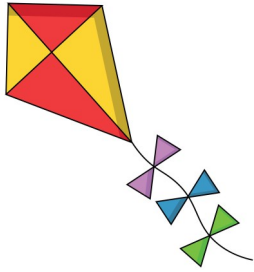


An order form was placed in your mailbox (and on tables upstairs and downstairs). The sandwiches are \$6 and orders are due by March 9. The money will be due with your order form. The sandwiches can be picked up in the Fellowship Hall on Saturday, March 22 at 11:00 am or after services on March 23. See the order form for more details. Thank you for supporting the 412 Youth!



March 9

Turn your clocks forward
one hour before bed on
Saturday, March 8.



MEET & Mingle

LUNCHEON



Sunday, March 9 @ 11:45 am

(immediately following the late worship service)

Please join us March 9 at 11:45 am for a Meet and Mingle Luncheon. The menu will consist of bbq, soup and sandwiches. Please bring a covered dish (side dish or dessert) to share as follows. Last name begins with:

- A to G: Side Dish (baked beans, potato salad, baked macaroni, pasta, etc.)
- H to R: Dessert
- S to Z: Salad (fruit or vegetable)

Remember to put your name on your dish to ensure it's return.



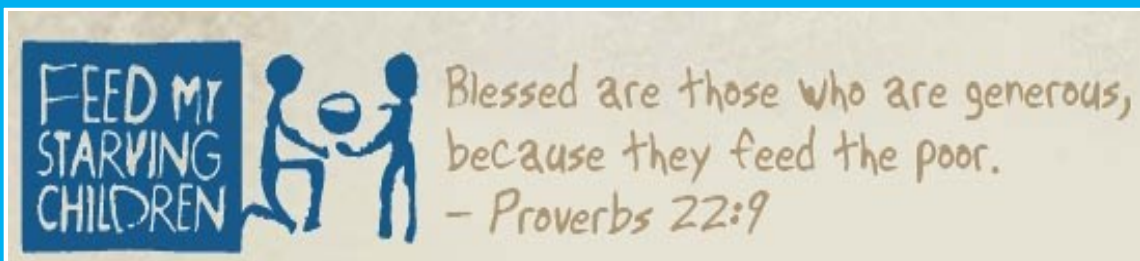
ECOG OFFERS MINISTRY TO ADULTS WITH INTELLECTUAL DISABILITIES!

Did you know that ECOG offers two ministries to adults with intellectual disabilities? Here is what we have to offer:

"The Ice Breakers Class" – A Sunday School class which meets at 9:15 AM every Sunday morning in Room #5 on the Lower Level. The Ice Breakers' goal is to "break the ice" and make people feel welcome. Class sessions include singing, a Bible lesson, coloring and storytelling.

"The Sonshine Crew" – A Fellowship Group which meets in the Sanctuary at 7:00 PM on Wednesday evenings throughout the school year. The Sonshine Crew consists of a fine "crew" of folks who want to shine for Jesus. Group activities include karaoke, worship, Bible skits, a Bible lesson review, and a Bible quiz time.

Do you know of an adult with intellectual disabilities who would benefit from one or both of these ministries? If so, tell them about what we have to offer and invite them to ECOG! We want to meet them!



Feed My Starving Children at Turning Point Church in Mechanicsburg

March 6th-9th

Thanks to all who signed up for this valuable ministry opportunity! Have a blessed time as you serve!

FMSC is a 501(C) (3) charitable nonprofit organization with a Tax ID #41-1601449 for those who would like to donate individually to this worthy cause. Go to Turning Point COG website to donate at www.lesspew.com.

Questions: Faith Duskey 717-576-0469

MICROSCHOOL LAUNCH SUB TASK FORCE UPDATE

by Pastor Jensen

The Administrative Board and the Vision Task Force have identified three initiatives that we believe God is calling us to pursue. These include 1) remodeling and expanding the Kitchen, 2) enhancing security measures during public events and 3) implementing a Christian Micro-school for parents who are looking for options beyond the public school system.

Much has happened in the last month since I gave a report from the Microschool Launch Sub Task Force in the January edition of The Sonshine News. Through many events guided by the Sovereign hand of God, the Task Force has felt led to make several significant changes to the plan to implement a Christian Microschool. These changes were approved by the Administrative Board at its February 11, 2025 meeting.

WHAT IS CHANGING?

The Task Force determined it would not be in the best interest of our microschool campus to operate under the direction and authority of The Samuel School. We are grateful to The Samuel School for the wisdom, counsel and prayer they have provided to us. We view them as co-laborers with us in God's kingdom and look forward to ways we can partner with them in mutual ministry opportunities pertaining to Christian education. But the Microschool at ECOG will not be called, "The Samuel School – Enola Campus." Furthermore, it will operate under its own LLC and Board of Directors (yet to be determined). Here are some ways this change will affect the plan moving forward at this point.

- The Microschool Task Sub Task Force will select a new name for the school.
- The Task Force will create a brochure, website and other appropriate tools to advertise the school.
- Our campus will begin operating solely as a hybrid microschool for homeschool students. This means that we will not operate as a hybrid private school. You may ask, "What is the difference?"
 - In a homeschool hybrid model, there is less "red tape" involved in start-up and day-to-day operations. Ultimately, parents are responsible for their children's education. To be sure, our school would determine curriculum, provide instruction and activities at the church 2 or 3 days during the work week while parents would take care of educating their children the remaining days in partnership with us. But they (the parents) would ultimately be responsible for having their children's progress evaluated. In other words, the school would not be responsible for providing "report cards."
 - In a private school model, the school handles evaluations (report cards) and is subject to many additional rules and regulations according to state law.
 - NOTE: As the Lord leads and as our school develops in, we may accept students in the future under the "private school" designation thus making our campus a private school. The Task Force is not opposed to this; it just seems impractical to do so at this time.
 - Last year, two persons from ECOG (that wish to remain anonymous) participated in the PA State Educational Improvement Tax Credit Program (EITC) designating these credits for the future "Samuel School – Enola Campus." The couple and the Administrative Board are in total agreement that those credits will be awarded The Samuel School main campus. We are pleased that The Samuel School will be blessed with this benevolence.
 - Our campus will manage advertising, applications, tuition collection, payroll, and other administrative matters on its own.

(Continued on page 11)

*(Continued from page 10)***WHAT IS STAYING THE SAME?**

- The Mission, Vision and Core Values of our school (as reported to you in the January edition of The Sonshine News) remain the same.
- The basic hybrid model remains the same. We will provide instruction and activities at the church for 2 or 3 days during the work week and parents will take care of educating their children the remaining days in partnership with us.
- We will still look for people to volunteer at the school.
- We will still be looking for ways to raise funds for the school. We will approach businesses, people in the community and our people at ECOG for donations and support for our microschool.
- We welcome and desire your prayers.

WHAT ARE THE ADVANTAGES AND DISADVANTAGES MOVING FORWARD?

- Disadvantages:
 - Transportation from public schools (“bussing”) is not provided to homeschool students.
 - Some families who prefer that their students come under private school law may not send their students to us initially.
- Advantages:
 - With less “red tape,” we anticipate being able to open this Fall (2025). If we would open our campus to private school students, we would have to wait a year or two to open due to additional regulations and paperwork.
 - Homeschool students can participate in sports and other extra-curricular activities in their local school districts (private school students do not have this option)
 - We anticipate tuition costs and start-up costs to be less than if we would open as a private school.
 - This model of school will be a great benefit to families who want to homeschool their children but cannot do so every day (due to employment or other time demands) or who need help in educating their children.
 - We will have access to resources available through the Home School Legal Defense Association (HSLDA).

We want to thank ALL of you who participated in the “Congregation Survey of the Samuel School - Enola Campus.” We have taken down the survey (paper copies and the website link have been removed) since it is no longer completely relevant. However, rest assured that your effort in participating in the survey was not in vain. We received valuable information that is still a tremendous help as we move forward. Further, the surveys revealed much enthusiasm and support that you as God’s people have for this part of our vision as a church. Finally, we appreciate your prayers—God is answering them! Feel free to direct any questions about the microschool initiative to any member of the sub task force which includes Lauren Cook, Jeff Imboden, Julia Imboden, Pastor George Jensen, Jill Kilker and Kathy Liddick.



Coffee House



Friday, March 28, 2025
7:00 PM



The entertainment for the evening will be



Randy Simpson

Randy has been travelling all of the US proclaiming the Gospel in song for over 19 years. He is recognized as one of the most exciting and dynamic singers in southern Gospel music today!



Join us in Fellowship Hall for snacks, beverages, and Christian entertainment in an informal atmosphere. Bring a friend and a snack to share!

A Freewill Offering will be received.

For a schedule of upcoming Coffee Houses throughout 2025, visit our website at www.enolacog.com/coffee-house



UPPER WEST SHORE ECUMENICAL MINISTERIUM GATHERINGS FOR LENT 2025

All Christians are invited to gather at noon on the Wednesdays in Lent to enjoy a light lunch and hear from our community's church leaders regarding the theme of "Faith Stories" focusing on biblical characters of great faith from Old and New Testament passages. A suggested donation of \$5 will be collected by each host church. Our series concludes on Good Friday, April 18 as we gather for breakfast at River of God Church (time to be announced). A free-will offering will be received to defray the cost of the meal. Here is the schedule for the 2025 gatherings.

March 12, noon – West Shore Church of the Brethren (6921 Wertzville Road, Enola, PA)
Abraham and Rahab – James 2:21-26

March 19, noon – St. Paul's Lutheran Church (6839 Wertzville Road, Enola, PA)
Ruth and Boaz – Ruth 4:9-17; Matthew 1:5

March 26, noon – Location to Be Announced
Jonah and his connection to Christ's passion – Matthew 12:38-42

April 2, noon – Enola First Church of God (9 Sherwood Drive, Enola, PA)
Mary, Martha, Lazarus and Jesus' impending death – John 12:1-8

April 9, noon – Location to Be Announced
James & John anticipating Jesus' kingdom – Mark 10:35-45

Friday, April 18 – River of God Church (747 Wertzville Rd, Enola, PA)
Jesus' crucifixion – Luke 23:33-47
A freewill offering will be collected to defray the cost of the meal



Easter Tulip Orders



We will be taking orders for Easter Tulips again this year! Watch for an order form in your mailbox later this month. Please fill it out (print clearly) and put it in an envelope along with your payment. It can then be placed in the offering plate. You are welcome to take your flower(s) home after services on Easter Sunday, April 20. Extra order forms will be located on the table in the Living Room.

DEADLINE to order:
Wednesday, APRIL 2, 2025

Puzzle!



Fill in the blanks with the tiny creatures mentioned in each verse (all NIV). Then search for those words in the puzzle below.

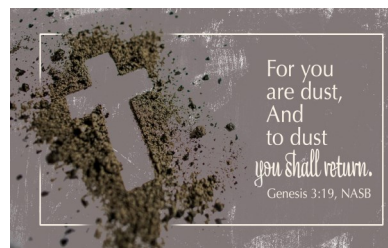
- | | | |
|------------------|-------|---|
| Proverbs 6:6 | _____ |  |
| Psalms 78:45 | _____ | |
| Matthew 23:24 | _____ | |
| Judges 14:8b | _____ | |
| Acts 12:23 | _____ |  |
| Leviticus 11:22 | _____ | |
| Leviticus 11:22 | _____ | |
| Deuteronomy 7:20 | _____ | |
| Exodus 16:20 | _____ | |
| 1 Samuel 24:14 | _____ | |
| Isaiah 50:9 | _____ | |
| Isaiah 59:5 | _____ | |
| Leviticus 11:22 | _____ |  |
| Leviticus 11:22 | _____ | |

M	O	T	H	S	G	N	A	T	B	H
A	N	T	A	L	L	C	H	P	E	O
G	R	A	S	S	H	O	P	P	E	R
G	F	C	R	I	C	K	E	T	S	N
O	L	S	P	I	D	E	R	S	B	E
T	E	C	L	O	C	U	S	T	D	T
S	A	E	F	K	A	T	Y	D	I	D
G	F	L	I	E	S	W	O	R	M	S



Answers: ant, flies, gnat, bees, worms, locust, grasshopper, hornet, maggots, flea, moths, spider, katydid, cricket

March 5
Ash Wednesday



March 9
First Sunday in Lent
Daylight Saving Time

March 20
First Day of Spring



**BLOOD PRESSURE****Next screening: MARCH 30**

The above Blood Pressure Screening will be held in the Upper Room at 10:15 am only. We will resume 9 am screenings in April. If any health care professionals or students are interested in helping, please contact Pat Watson at pwatson4@verizon.net.



Eastern Regional Conference Sessions will take place **March 31–April 1** at Doubling Gap Center. Please pray for our pastors and staff (George Jensen, Sandi Baney, and Jill Kilker) and our delegates (Heidi Bupp and Nancy Lackey) who will represent ECOG at the sessions.

**All children, ages 3-6th grade are invited.**

Saturday, April 5
10 am – 2 pm

**Parents' Day Out
&
Children's Ministry
Easter Party**

Parents, would you like a few hours to go out to eat, shop, or relax? We are happy to give you some time off.

Children, would you like to hear Bible stories, do crafts, play games, enjoy snacks, have lunch, and participate in an Easter egg hunt? We are going to have a great time together.

Sign-up Sheet Coming Soon!

Please sign up for this exciting event at "Sign-Up Central" by March 23rd.

**Donations
Needed**

In order to prepare for the egg hunt, the Children's Ministry is asking for donations of individually wrapped candy, and small toys/prizes. Later in March, look for a box both upstairs and downstairs inside the doors for you to place donations. Thank you in advance for your contributions.



ALBRIGHT LIFE CENTER

Living Independence for the Elderly

Local Program Offers Seniors an Alternative to Nursing Facility

The Lamplighters recently met with Mary Lynn Hawk, a representative from Albright Life Center to hear about an alternative for seniors who want to stay in their home versus going to a nursing home. Their program called LIFE (Living Independence for the Elderly) is for those with Medicare, Medicaid, or both or you can also pay privately. To qualify for the program you must:

- Be 55 or older
- Live in the service area of a LIFE organization (this local office covers Cumberland and Perry Counties)
- Need a nursing home level of care (as certified by the state)
- Be able to live safely in the community with help from LIFE

The program covers all the care and services covered by Medicare and Medicaid if authorized by a health care team who will make an assessment. This includes medications, assistance with daily living, social services, transport to the LIFE center (on Good Hope Rd.) for activities or medical appointments, and much more! If interested, there are pamphlets on the table in the living room or for more information or for a tour of the center, contact Mary Lynn Hawk at (717) 557-6181.



Morning Star

Surrendering the Secret at Morning Star

Many women who have experienced abortion(s) hide the secret deep in their hearts and suffer in silence. For years women may struggle with guilt, shame, anger and depression. The Surrendering the Secret 8-week Bible study enables women to release these burdens and find healing through God's Word in a caring, compassionate and confidential environment. Spring and fall groups are available. To join and/or for more information, please call Morning Star at 717-403-6330 or email STS@morningstarclinics.com. All inquiries are confidential.

Mark Your Calendar!

VBS 2025

June 22–26 (S-Th) / 6-8:30 PM

Ages 4—Grade 6

The theme this year is: **“Wonder Junction”**

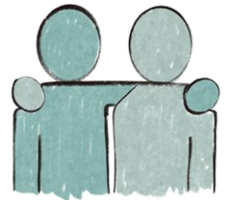
More details to come!



A SUPPORT GROUP IS AVAILABLE AT ECOG!

Are you struggling with grief, fear, anger, worry, a poor self-image, a lack of hope, resentment, a grudge, an addiction or various hurts? If so, you may want to consider checking out the Christ-Centered Support Group that is meeting at ECOG on Monday evenings. Romans 12:4-5 states, “For as in one body we have many members, and the members do not all have the same function, so we, though many, are one body in Christ, and individually members one of another.” The body of Christ is a great place to come to bear one another’s burdens. The purpose of the group is to provide understanding, comfort, emotional and spiritual support to individuals who struggle with any hurt, habits or unresolved issues. All of this takes place within a Christian atmosphere. Group members support each other through Scripture and personal experience. Group members are not expected to “fix one another.”

Feel free to come out any Monday evening or see Dave or Faith Duskey for more information. You are also welcome to contact Pastor Rodger & Cindy Scheuing from the Marysville Church of God who are leading the group.



Meals Ministry Available

The Lamplighters are pleased to offer a Meals Ministry. Thanks to all of our volunteers who make this possible! We appreciate your willingness to help our church members in need! If you would like to volunteer, please sign up at “Sign-Up Central”.

If you are ill, recovering from a surgery or debilitating illness, or other challenging circumstance, please contact the church office at 717-732-4253 to request this service. We will reach out and schedule your meal delivery. This will likely be every other day for a set period of time. If you are ill with a contagious condition like Covid or Flu, we will need to leave food in a safe manner at the door. **A request form can be downloaded from our website at enolacog.com/meals-ministry.** For more detailed information, please contact Pat Watson at 717-979-0219 (text or call) or email pwatson4@verizon.net.

STAFF TIME AWAY IN MARCH

⇒ **Marilyn Zahora**, Secretary, will be on vacation **March 11-19**.

⇒ **Amy Kreiger**, Administrative Assistant, will be on vacation from **March 18-22**. Please direct prayer chain requests to Pastor Jensen during this time.

Please Note: Office hours for March 2025 will be as follows:

Thursday, March 6 – 10am to 3pm

Friday, March 14 – 10am to 3pm

Friday, March 21 – 10am to 3pm

Thursday, March 27 – 10am to 3pm



PRAYER CHAIN

Prayer Chain call? Who to contact and how the process works . . .

As fellow believers, we have the incredible opportunity to pray for each other. When you take your concerns to the Lord but also want your church family to join you in prayer, you simply need to contact Amy Kreiger to start the process of more prayer. Amy first sends an email (how the majority of the prayer chain is reached) which is also received by Liz Swope who then contacts those that prefer a phone call. You may reach Amy via email at akreiger@enolacog.com, call her home at 717-728-4522, or text her at 717-329-1646. She will send the email as soon as she can, which may be later that day or the next day, depending on when you send the request. If there is an emergency or time sensitive request, please send her a text message.

If you're reading this notice and didn't realize we had a prayer chain and would like to be part of the praying community, please contact Amy Kreiger at one of the above options about being added to the list.

Sanctuary Flowers



The 2025 Flower Chart is available on the wall in the Living Room! You can place flowers in the Sanctuary in honor or in memory of someone on a given Sunday. Just sign up on the chart located on the wall in the Living Room (near the elevator). **The cost is \$35.50 per vase.** Your payment can then be put in an envelope and dropped in an offering box. The Secretary will order flowers for the Sunday indicated. You are welcome to take them home after that Sunday's services.

SNOW & INCLEMENT WEATHER CANCELLATIONS WINTER 2024-2025

Below is a list of information sources to find out if a service or church event is cancelled due to snow or inclement weather. Please note: Every effort will be made to announce Sunday morning cancellations by 6:00 am.

TELEVISION – CBS-21

INTERNET - www.enolacog.com, www.abc27.com, www.local21news.com.

TELEPHONE – 732-4253 (listen for a message)

FACEBOOK – ECOG Enola First Church of God Facebook page

*Note: In rare instances, a Sunday-morning cancellation may occur after 6:00 am. **You may sign up at “Sign Up Central” to be notified of post-6:00 AM cancellations by telephone.** Even if you signed up for post-6:00 AM phone calls in a previous year, you must do so again for the 2024-2025 winter season. Please be aware that such phone calls will only be made for post-6:00 AM Sunday morning cancellations. Phone calls will NOT be issued for Sunday morning cancellations occurring before 6:00 AM.*



ECOG is on Facebook!

Go onto Enola First Church of God's Facebook page and let the world know that you "like" it! By the way, if you're not on Facebook, you can still check out the church's page.



**Thank
You!**

Thank you to our generous donors who have been helping supply personal care items to "New Hope Ministries! The need is still great for these items! This can include any of the following items for example: Wipes, diapers, toilet paper, shampoo, soap, lotions, conditioner, female sanitary products, toothpaste, tooth brushes, dental floss, hand soap and hand sanitizer, baby products, shaving cream and razors, deodorant, brushes and combs, mouth wash, first aid items, Q-tips, scissors, tweezers, and nail clippers. Drop off any items at the lower entrance in the shopping cart or upstairs in the living room cart! Thank you again for your generosity!



Newsletter Deadline

Help us make this YOUR newsletter! People like to see events being planned and also hear about things that have happened. Please submit any articles to Marilyn, the Church Secretary via email at

mzahora@enolacog.com

by the 15th of each month.

OFFERING PLATES

Please be aware that those of you who place money in the offering plates at the back of the sanctuary during the Sunday school hour will need to either place it in one of the metal wall boxes in the entry way (upstairs and downstairs) or hold it until the greeters arrive for the 10:30 service. The offering plates will be turned upside down to remind you to place it in one of the metal wall boxes. The greeters will turn the plates over to receive offering. Thank you!



Online Tithing is Available

More and more of our members are using online bill paying these days instead of traditional check writing. To support this trend, our Stewards team made possible the availability of tithing using an Internet application or a mobile device via Vanco.

Information and instructions about online giving has been posted to our Enola COG website. Questions on online tithing can be directed to our Treasurer, Amy Kreiger. Thank you.



WEEKLY OFFERINGS SUMMARY

DATE	OFFERING	BUILDING FUND
01-26-25	\$7,586.00	\$76.00
02-02-25	\$5,313.00	\$6,937.00
02-09-25	\$4,674.00	\$3.00
02-16-25	\$4,986.00	\$63.00



General Fund Status		
January 2025		Year to Date
Income	\$24,755.00	\$24,755.00
Expenses	\$26,599.00	\$26,599.00



UPDATE MARCH 2025



CAMP STAFF

Serve at Camp YoliJwa! We need volunteers for each week of Camp this summer! Volunteer opportunities include counseling, maintenance, and kitchen work! Applications to counsel and volunteer are available on our website. Apply today!

Saturday, May 10

Want to earn a free week of Camp this summer? Hike 6 miles or rock for 4 hours to support the ministry here at Camp! Find more info on how to participate on our website!

HIKE-N-ROCK- R-THON



CAMP HOPE

June 1-6

A unique camp for intellectually disabled adults (ages 16+). Call Camp for a registration brochure. Male & female counselors needed!

Saturday, June 7

1-5PM

Bounce Houses - Pool
Hayrides - Camp Activities
Craft Sale - Live Music

And as always... Camp's famous Chicken BBQ!

OPEN HOUSE



WILDERNESS CAMPS

Looking for Adventure? Attend one of our Wilderness Camps! Programs are available for both Jr. High & Sr. High. Enjoy the experience of staying in our cabins while experiencing God's creation!

Phone: (717) 776-5281

Website: www.campyolijwa.org



412 YOUTH NEWS

The 412 Youth is a vibrant, active group that meets each Wednesday evening from 7-8 pm, September through May. We also meet throughout the year for various activities and exciting events! Bring your friends!

UPCOMING YOUTH GROUP ACTIVITIES/EVENTS:

March 7th — Feed My Starving Children food packing event—Meet at the church at 5 p.m. We will return to the church at 8:20 p.m. Permission slips are required. Please DO NOT wear any jewelry.

Saturday, March 22 at 9 am — Sandwich Making in the Fellowship Hall. Sandwiches can be picked up at 11:00 am.

Sunday, March 23— Sandwich Orders can be picked up after first service, Sunday school, or second service.

April 12th--hiking event at Detweiler Park...more details coming soon...Permission slips required.

Summer Activity—Possible beach retreat—July 15-17...This is still in its planning stage. Please stay tuned for additional details.

All youth and parents are encouraged to see one of the Youth Service Team members if you have questions. They are: Joe & Jill Kilker, Sherrie Kauffman, Diana Bridges, and Jeff Lynch.



1 Liz Swope

3 Cindy Marrow

4 Jason Dreibelbis

10 Jill Kilker
Dawn Little

11 Barry Wolfe

12 Elli Cook

15 Dawn Bowersox

20 Tammy Whitaker

21 Ralph Mundis

22 David Duskey

29 Sandy Mundis

4 Greg & Sherrie Kauffman

25 Dutch & Sandy Reed, Jr.



Enola First Church of God

9 Sherwood Drive
Enola, PA 17025

Phone: 717-73 BIBLE (732-4253)

Fax: 717-732-4875

E-mail: ecog@enolacog.com



Enola 1st Church of God

We serve as a Lighthouse of God to guide people to salvation in Jesus Christ. Worship, love, encouragement, and biblical teaching are the foundation by which we prepare people to face the storms of life.

Reflecting God's Light

Enola 1st Church of God

WWW.ENOLACOG.COM

We serve as a Lighthouse of God to guide people to salvation in Jesus Christ. Worship, love, encouragement, and biblical teaching are the foundation by which we prepare people to face the storms of life.



Reflecting God's Light